



PIPE TOOLS & VISES
SINCE 1896

Universal Pipe Cutter (UPC) Replacement Parts Booklet

Table of Contents

| Drawing Number | Description |
|----------------|---------------------------------|
| U1 | UPC Front View |
| U2 | UPC Pneumatic Rear View |
| U3 | UPC Hydraulic Rear View |
| U4 | UPC Mainframe Assembly |
| U5 | UPC Bladeguard Assembly |
| U6 | UPC Blade & Arbor Details |
| U7 | UPC Turnbuckle & Chain Assembly |
| U8 | UPC Connecting Frame Assembly |
| U9 | UPC Motor Bracket Assembly |
| U10 | UPC Hydraulic Motor Assembly |
| U11 | UPC Pneumatic Motor Assembly |

How to use this booklet:

To locate a specific part, refer to drawings U1, U2 and U3 which contain assembled views of the UPC. Find the general area in which the part is located. Refer to the cross reference table on the bottom of the drawing. This table will indicate a detail drawing number for that general area. Refer to that drawing number for the nomenclature for the part. The exploded detail drawings are numbered U4 through U11. Additional UPC operating accessories such as wedges, grease, dressing sticks, etc. can be located online (www.reedmfgco.com) and in the Reed catalog and price book. Further information can be obtained from Reed Manufacturing Company.

*UPC Hydraulic models were discontinued at Reed in 2009. Some replacement parts are available.



PIPE TOOLS & VISES
SINCE 1896

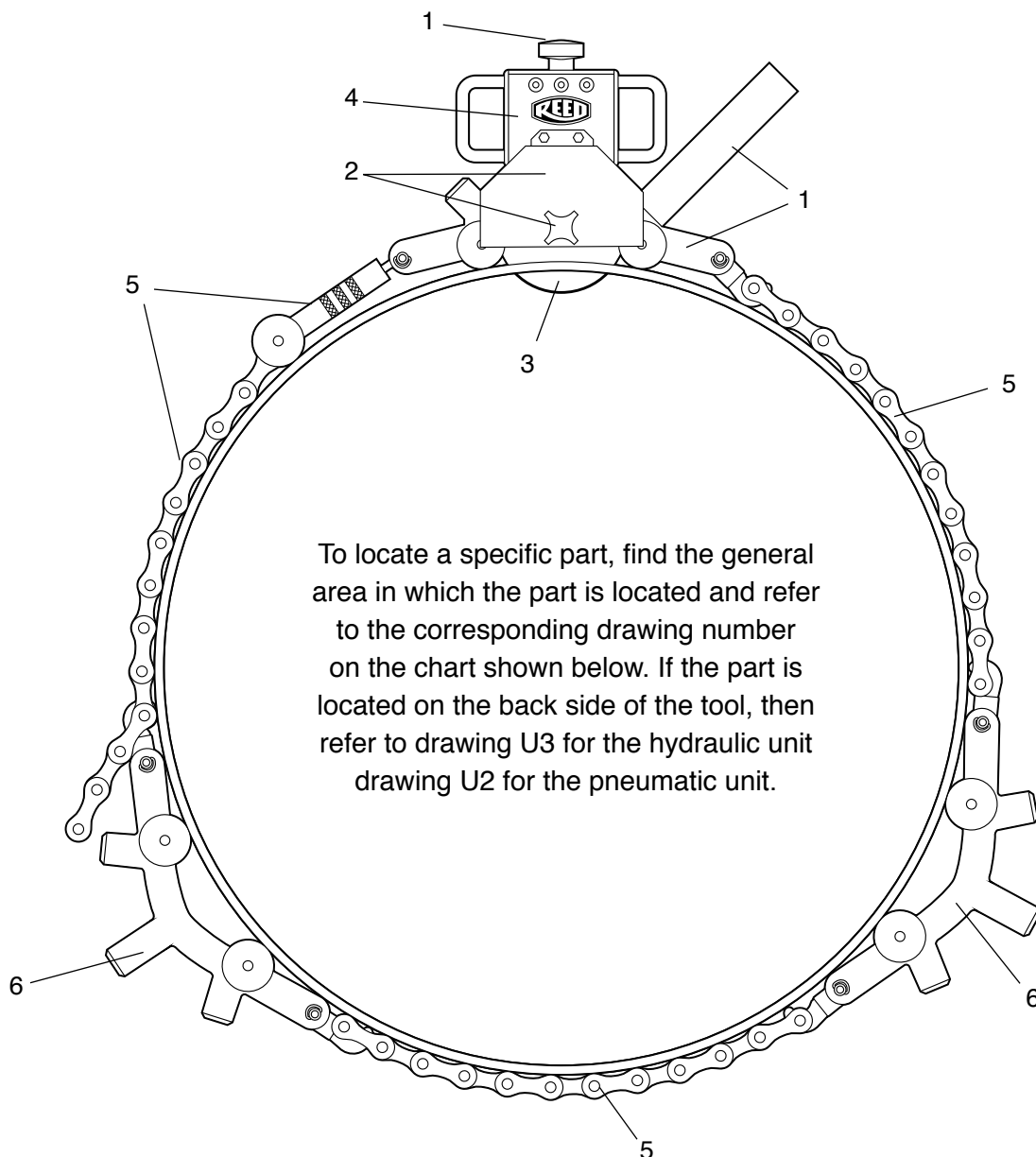
Universal Pipe Cutter (Pneumatic & Hydraulic Models)

Replacement Parts

Front View

Drawing No.

U1



To locate a specific part, find the general area in which the part is located and refer to the corresponding drawing number on the chart shown below. If the part is located on the back side of the tool, then refer to drawing U3 for the hydraulic unit drawing U2 for the pneumatic unit.

Ref.

No. For detailed parts explosion information see:

| | |
|---|----------------------|
| 1 | Explosion Drawing U4 |
| 2 | Explosion Drawing U5 |
| 3 | Explosion Drawing U6 |
| 4 | Explosion Drawing U9 |
| 5 | Explosion Drawing U7 |
| 6 | Explosion Drawing U8 |



PIPE TOOLS & VISES
SINCE 1896

Universal Pipe Cutter (Pneumatic Only)

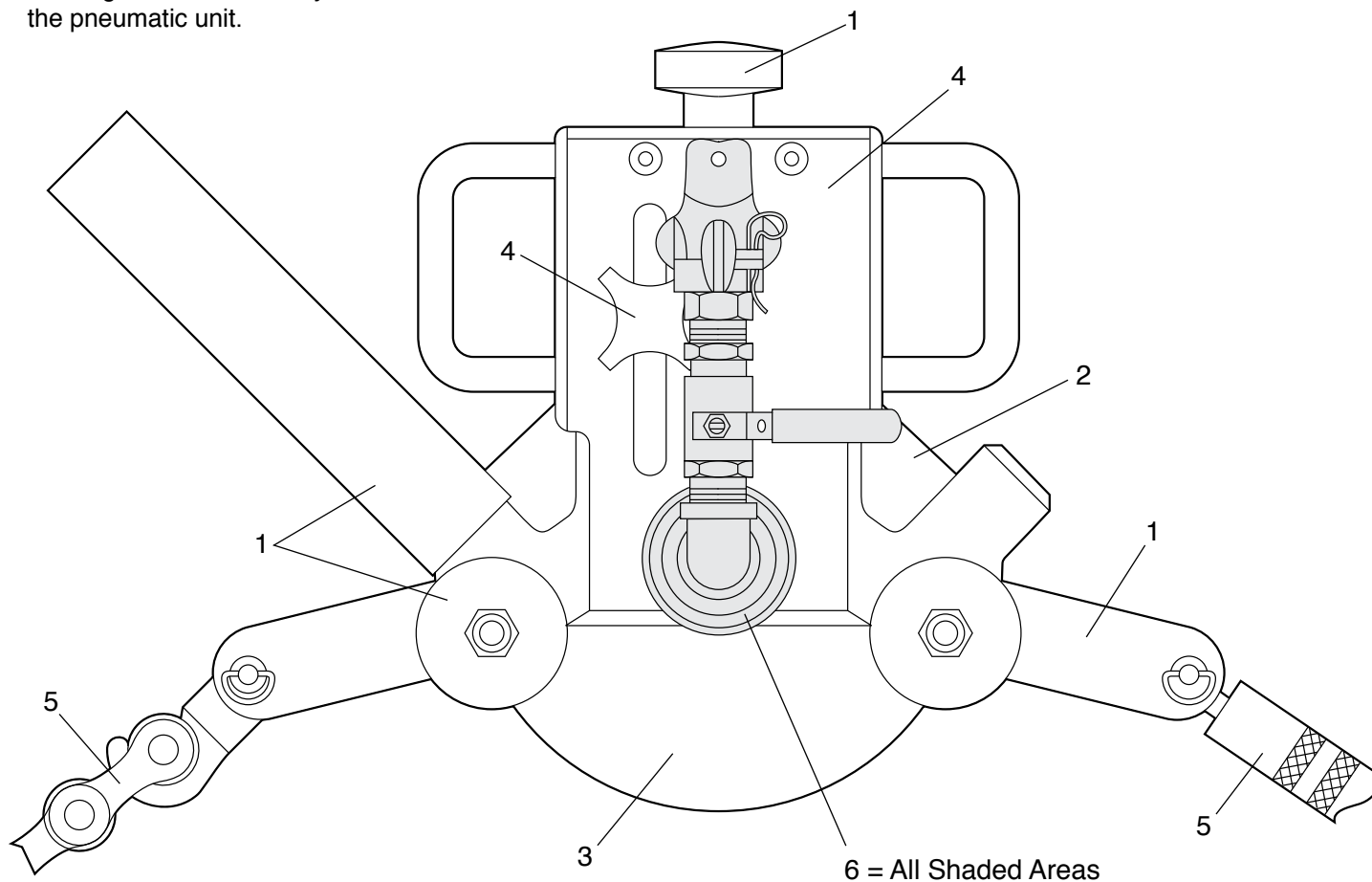
Replacement Parts

Drawing No.

U2

To locate a specific part, find the general area in which the part is located and refer to the corresponding drawing number on the chart shown below. If the part is located on the front side of the tool, then refer to drawing U1 for both the hydraulic unit and the pneumatic unit.

Rear View



| Ref. | |
|------|---|
| No. | For detailed parts explosion information see: |
| 1 | Explosion Drawing U4 |
| 2 | Explosion Drawing U5 |
| 3 | Explosion Drawing U6 |
| 4 | Explosion Drawing U9 |
| 5 | Explosion Drawing U7 |
| 6 | Explosion Drawing U11 |



PIPE TOOLS & VISES
SINCE 1896

Universal Pipe Cutter (Hydraulic Only)

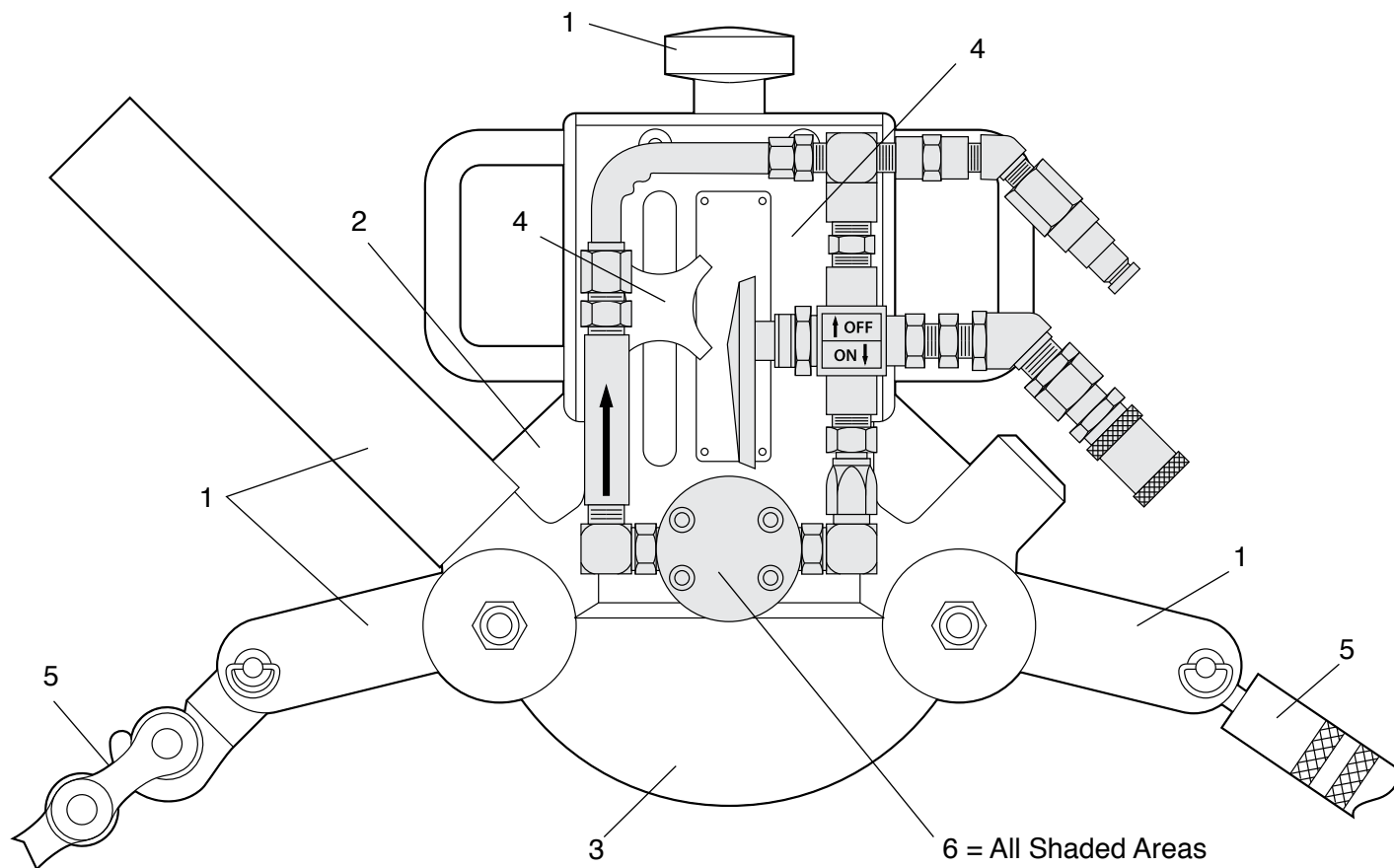
Replacement Parts

To locate a specific part, find the general area in which the part is located and refer to the corresponding drawing number on the chart shown below. If the part is located on the front side of the tool, then refer to drawing U1 for both the hydraulic unit and the pneumatic unit.

Drawing No.

U3

Rear View



Ref.

No. For detailed parts explosion information see:

| | |
|---|-----------------------|
| 1 | Explosion Drawing U4 |
| 2 | Explosion Drawing U5 |
| 3 | Explosion Drawing U6 |
| 4 | Explosion Drawing U9 |
| 5 | Explosion Drawing U7 |
| 6 | Explosion Drawing U10 |

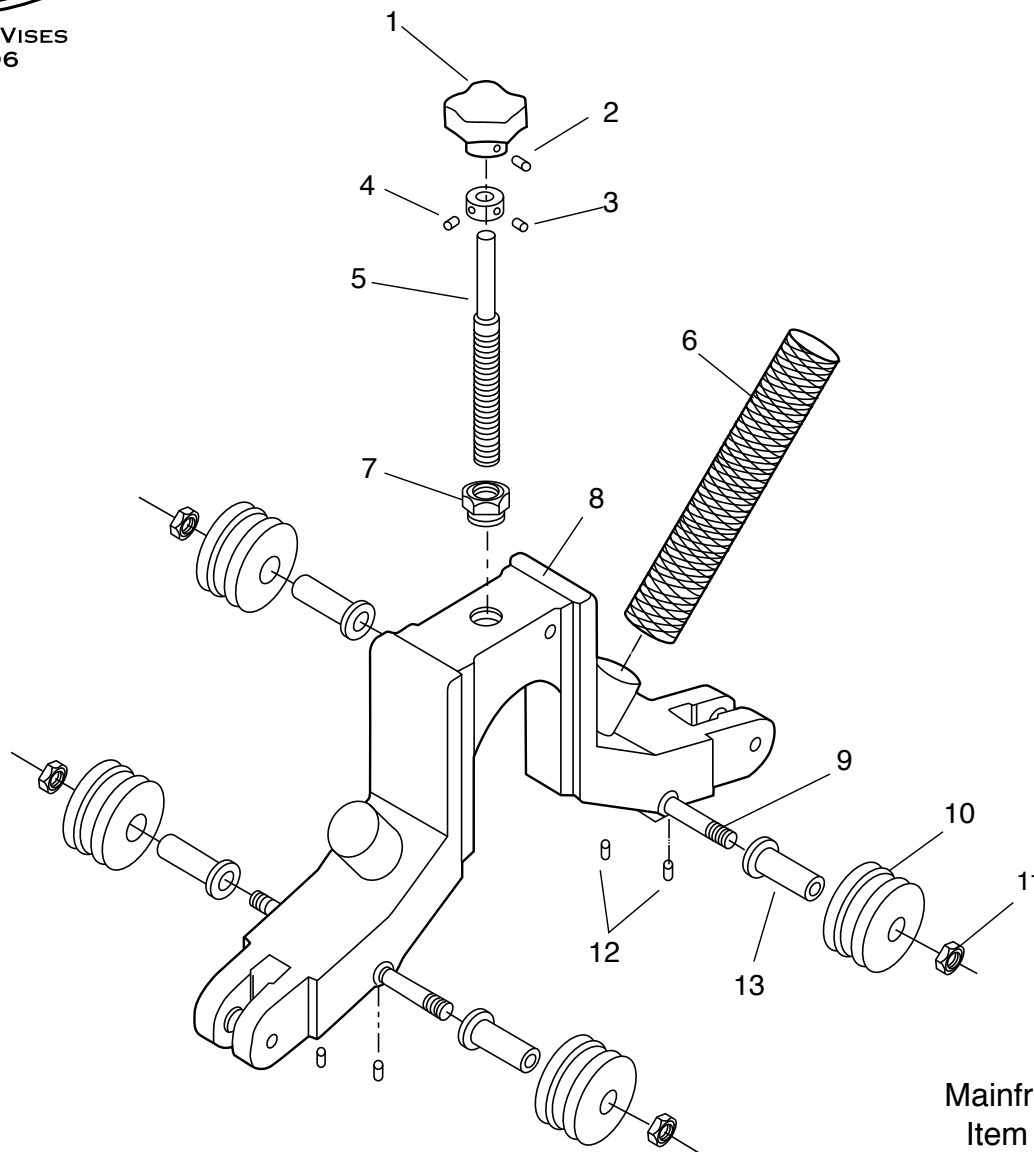
* UPC Hydraulic models were discontinued at Reed in 2009. Some replacement parts are available.



PIPE TOOLS & VISES
SINCE 1896

Universal Pipe Cutter (Mainframe Assembly)

Replacement Parts



Drawing No.

U4

Complete
Mainframe Assembly
Item Code #97067*

Parts List

| Ref. No. | Description | Item Code | Qty |
|-------------|-----------------|--------------|-----|
| 1 | Feed Knob | 97551 | 1 |
| 2 | Set Screw | 30087 | 1 |
| 3 | Collar | 93140 | 1 |
| 4 | Set Screw | 40083 | 2 |
| 5 | Feed Screw | 97547 | 1 |
| 6 | Handle* | 97582 | 1 |
| 7 | Bushing | 97548 | 1 |
| 8 | Mainframe | 97068 | 1 |
| 9 | Roller Pin | 97542 | 2 |
| 10 | Roller | 97541 | 4 |
| 11 | Flexloc Nut | 97543 | 4 |
| 12 | Set Screw | 97544 | 4 |
| 13 | Flanged Bearing | 97010 | 4 |

* #97582 Handle not included with #97067.

Reed Manufacturing
1425 West 8th Street
Erie, PA 16502 USA

QUALITY
& Service
that Last a Lifetime

Phone: 800-666-3691 or +1-814-452-3691
reedsales@reedmfgco.com
www.reedmfgco.com

RP-0321-114U4



PIPE TOOLS & VISES
SINCE 1896

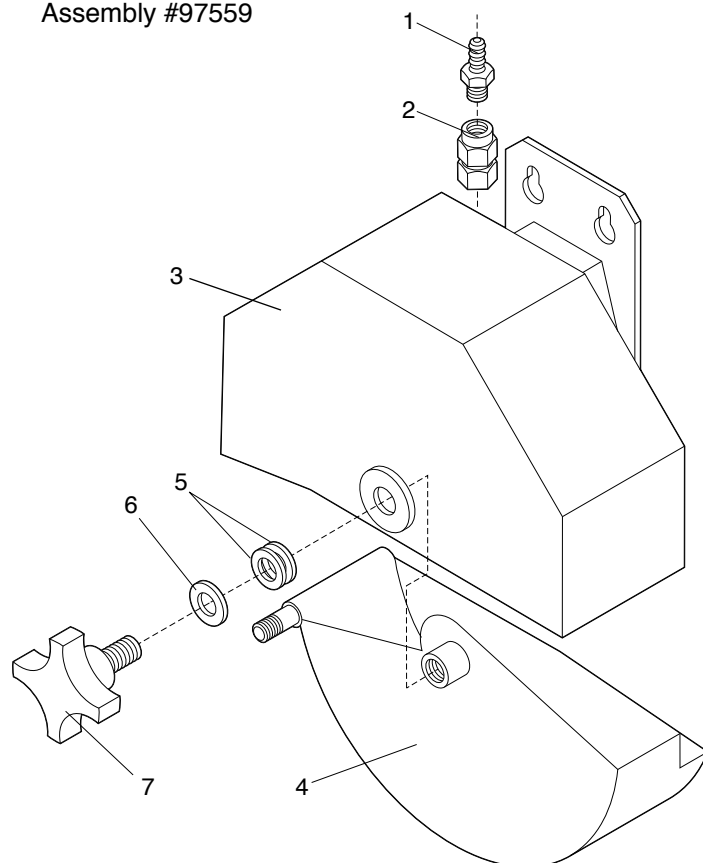
Universal Pipe Cutter (Blade Guard Assembly)

Replacement Parts

Drawing No.

U5

Complete Blade Guard
Assembly #97559

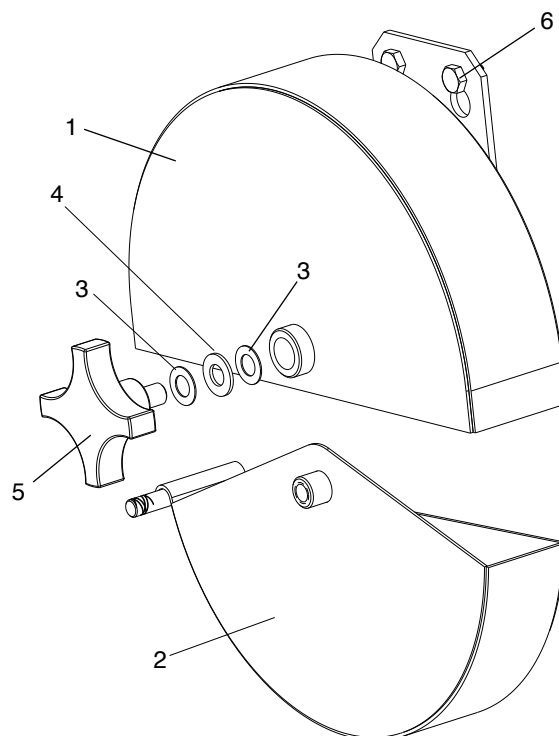


UPC616, UPC636, and UPC648 Models

Parts List

| Ref. No. | Description | Item Code | Qty |
|----------|-------------------|-----------|-----|
| 1 | Hose Barb | 40026 | 1 |
| 2 | Female Connector | 40167 | 1 |
| 3 | Blade Cover | 97601 | 1 |
| 4 | Blade Guard | 97600 | 1 |
| 5 | Belleville Washer | 97562 | 2 |
| 6 | Nylon Washer | 97553 | 1 |
| 7 | Knob Assembly | 97578 | 1 |

Complete Blade Guard
Assembly #07509
Used for PE cutting only.



UPC836 and UPC848 Models

Parts List

| Ref. No. | Description | Item Code | Qty |
|----------|---------------------|-----------|-----|
| 1 | Blade Cover | 97604 | 1 |
| 2 | Blade Cover - Lower | 97603 | 1 |
| 3 | Belleville Washer | 97562 | 2 |
| 4 | Nylon Washer | 97553 | 1 |
| 5 | Knob Assembly | 97578 | 1 |
| 6 | Screw | 30156 | 2 |



PIPE TOOLS & VISES
SINCE 1896

Universal Pipe Cutter (Blade & Arbor Assembly)

Replacement Parts

Drawing No.

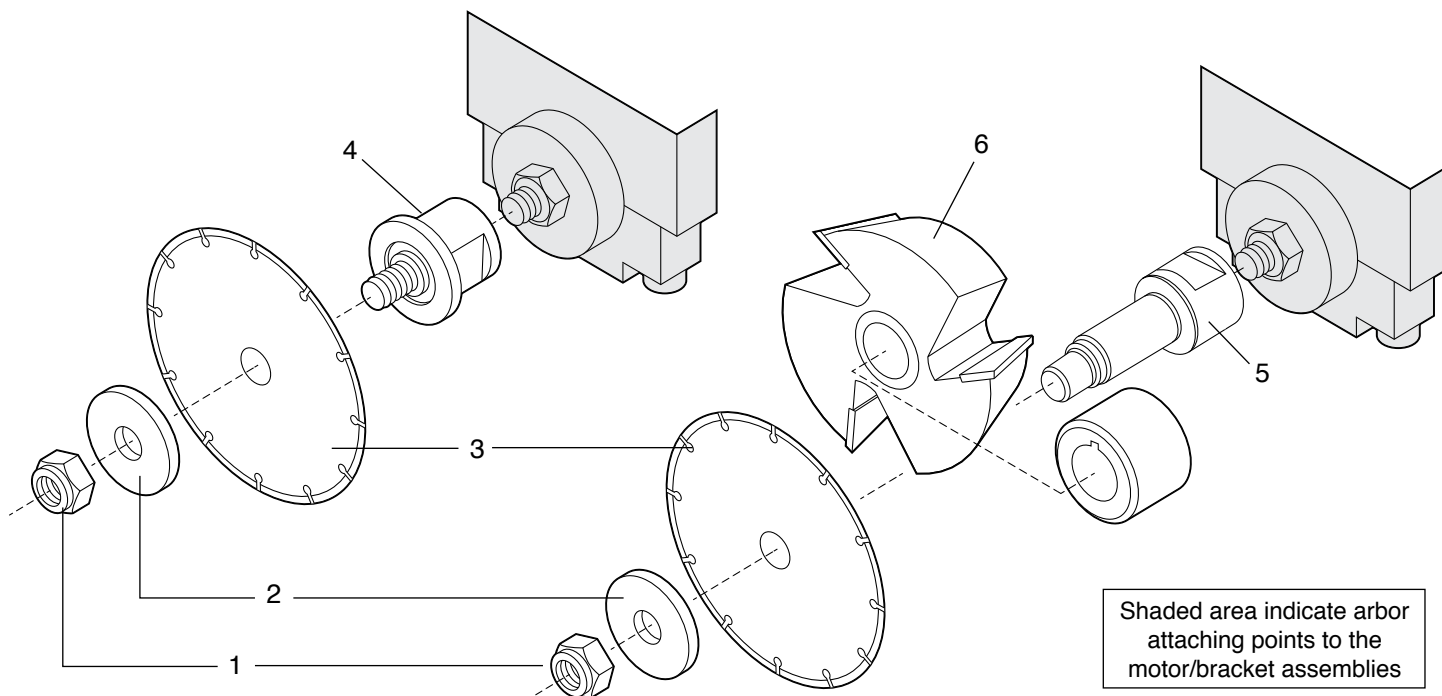
U6

Short Arbor Assembly

Standard on UPC Pneumatic

Long Arbor Assembly

Optional on UPC Pneumatic*



Parts List

| Ref. No. | Description | Item Code | Qty |
|----------|--|-----------|-----|
| 1 | Locknut | 97543 | 1 |
| 2 | Flanged Washer | 97066 | 1 |
| 3 | Blade See Blade Chart On Box Lid Or Online | | 1 |
| 4 | Short Arbor (Standard On UPC Pneumatic) | 97617 | 1 |
| 5 | Long Arbor (Optional On UPC Pneumatic) | 97561** | 1 |
| 6 | PVC Bevel Cutter (Optional) | 97511 | 1 |

*UPC Hydraulic models were discontinued at Reed in 2009. Some replacement parts are available.

**Old style Long Arbor with Key Slot should be updated to current Long Arbor shape. This also eliminates need for the Arbor Spacer.



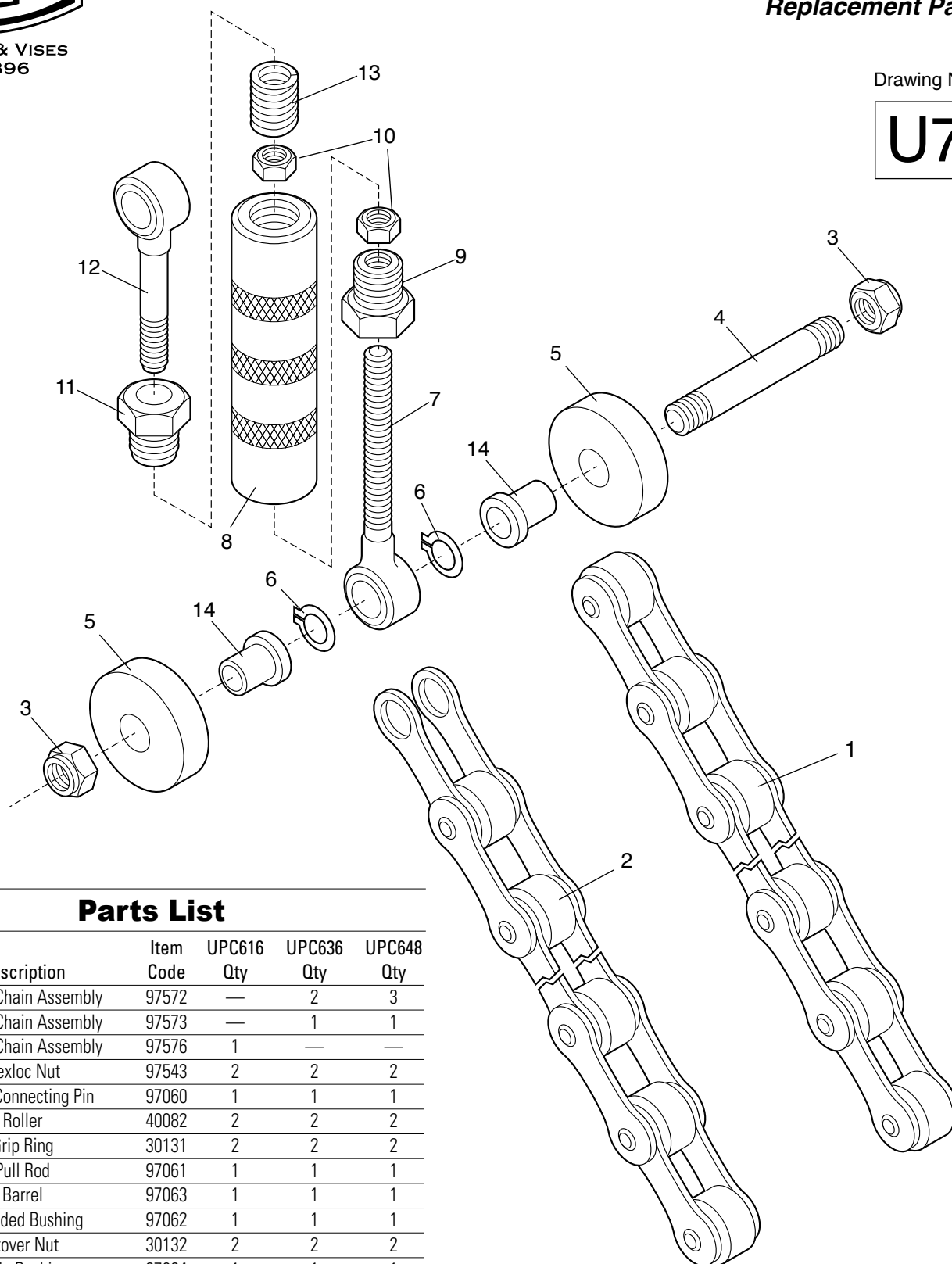
PIPE TOOLS & VISES
SINCE 1896

Universal Pipe Cutter (Turnbuckle & Chain Assembly)

Replacement Parts

Drawing No.

U7



Parts List

| Ref. No. | Description | Item Code | UPC616 Qty | UPC636 Qty | UPC648 Qty |
|----------|------------------------|-----------|------------|------------|------------|
| 1 | 11 Link Chain Assembly | 97572 | — | 2 | 3 |
| 2A | 13 Link Chain Assembly | 97573 | — | 1 | 1 |
| 2B | 19 Link Chain Assembly | 97576 | 1 | — | — |
| 3 | Flexloc Nut | 97543 | 2 | 2 | 2 |
| 4 | Chain Connecting Pin | 97060 | 1 | 1 | 1 |
| 5 | Roller | 40082 | 2 | 2 | 2 |
| 6 | Grip Ring | 30131 | 2 | 2 | 2 |
| 7 | Pull Rod | 97061 | 1 | 1 | 1 |
| 8 | Barrel | 97063 | 1 | 1 | 1 |
| 9 | Threaded Bushing | 97062 | 1 | 1 | 1 |
| 10 | Stover Nut | 30132 | 2 | 2 | 2 |
| 11 | Slide Bushing | 97064 | 1 | 1 | 1 |
| 12 | Spring Rod | 97065 | 1 | 1 | 1 |
| 13 | Spring | 40276 | 1 | 1 | 1 |
| 14 | Flanged Bearing | 40081 | 2 | 2 | 2 |

Complete Turnbuckle & Chain Assembly
#97579 UPC636, UPC648
#97580 UPC616
(Item #1 not included with either)



PIPE TOOLS & VISES
SINCE 1896

Universal Pipe Cutter (Turnbuckle & Chain Assembly)

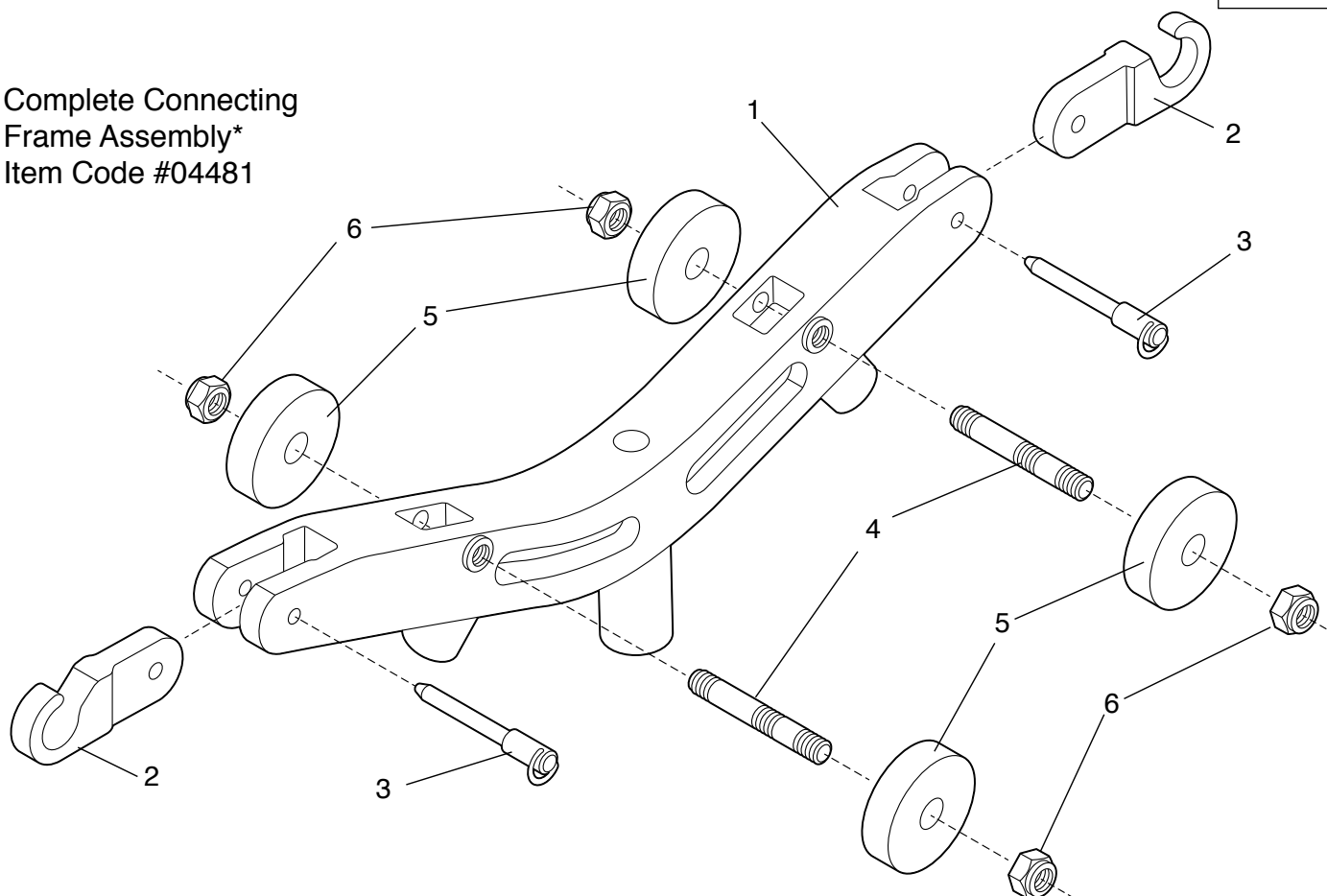
Replacement Parts

Pneumatic & Hydraulic Models

Drawing No.

U8

Complete Connecting
Frame Assembly*
Item Code #04481



*Connecting Frame Assembly #04481 does not include part #2 (Chain Hook) & part #3 (Release Pin).
These items must be ordered separately. Please refer to chart below.

Parts List

| Ref. No. | Description | Item Code | Qty |
|-------------|--------------|--------------|-----|
| 1 | PLACC Yoke | 97569 | 1 |
| 2 | Chain Hook | 97546 | 2 |
| 3 | Release Pin | 97545 | 2 |
| 4 | Roller Pin | 97536 | 2 |
| 5 | PLACR Roller | 97570 | 4 |
| 6 | Flexloc Nut | 30143 | 4 |

Convert UPC616 to UPC636

| Item Code | Description | Quantity Used |
|--------------|------------------------|---------------|
| 04481 | PLASC C Section | 2 |
| 97546 | Chain Hook | 2 |
| 97545 | Release Pin | 2 |
| 97572 | 11 Link Chain Assembly | 2 |

Convert UPC636 to UPC648

| Item Code | Description | Quantity Used |
|--------------|------------------------|---------------|
| 04481 | PLASC C Section | 1 |
| 97546 | Chain Hook | 2 |
| 97545 | Release Pin | 2 |
| 97572 | 11 Link Chain Assembly | 1 |



PIPE TOOLS & VISES
SINCE 1896

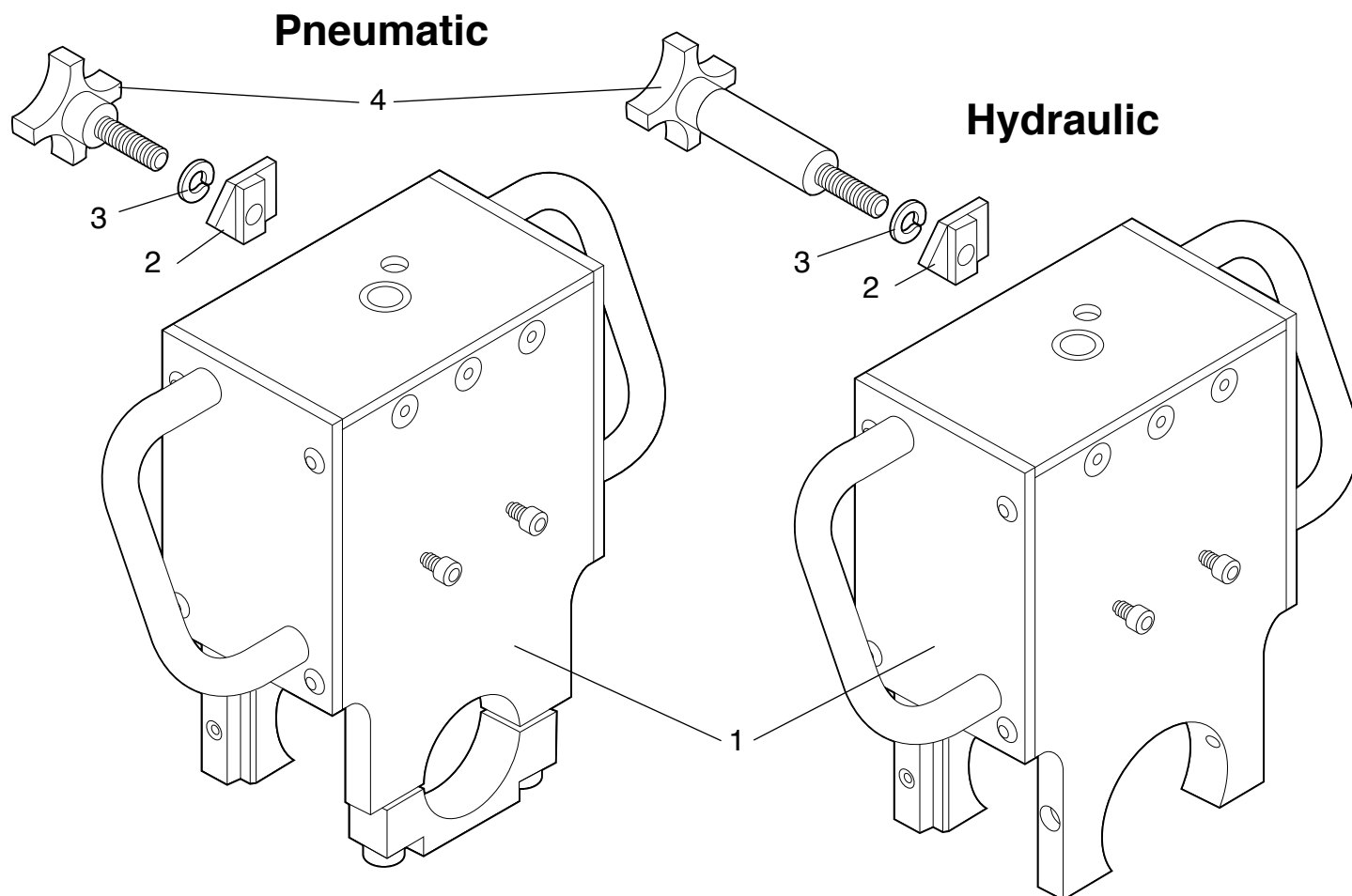
Universal Pipe Cutter (Motor Bracket Assemblies)

Replacement Parts

Drawing No.

U9

Pneumatic & Hydraulic Models



| Pneumatic | | | | Hydraulic | | | |
|-----------|------------------------|-----------|-----|-----------|------------------------|-----------|-----|
| Ref. No. | Description | Item Code | Qty | Ref. No. | Description | Item Code | Qty |
| 1 | Motor Bracket Assembly | 97555 | 1 | 1 | Motor Bracket Assembly | 97615 | 1 |
| 2 | Nylon Washer | 97553 | 1 | 2 | Nylon Washer | 97553 | 1 |
| 3 | Indicator | 97554 | 1 | 3 | Indicator | 97554 | 1 |
| 4 | Knob Assembly | 97552 | 1 | 4 | Knob Assembly | 97613 | 1 |



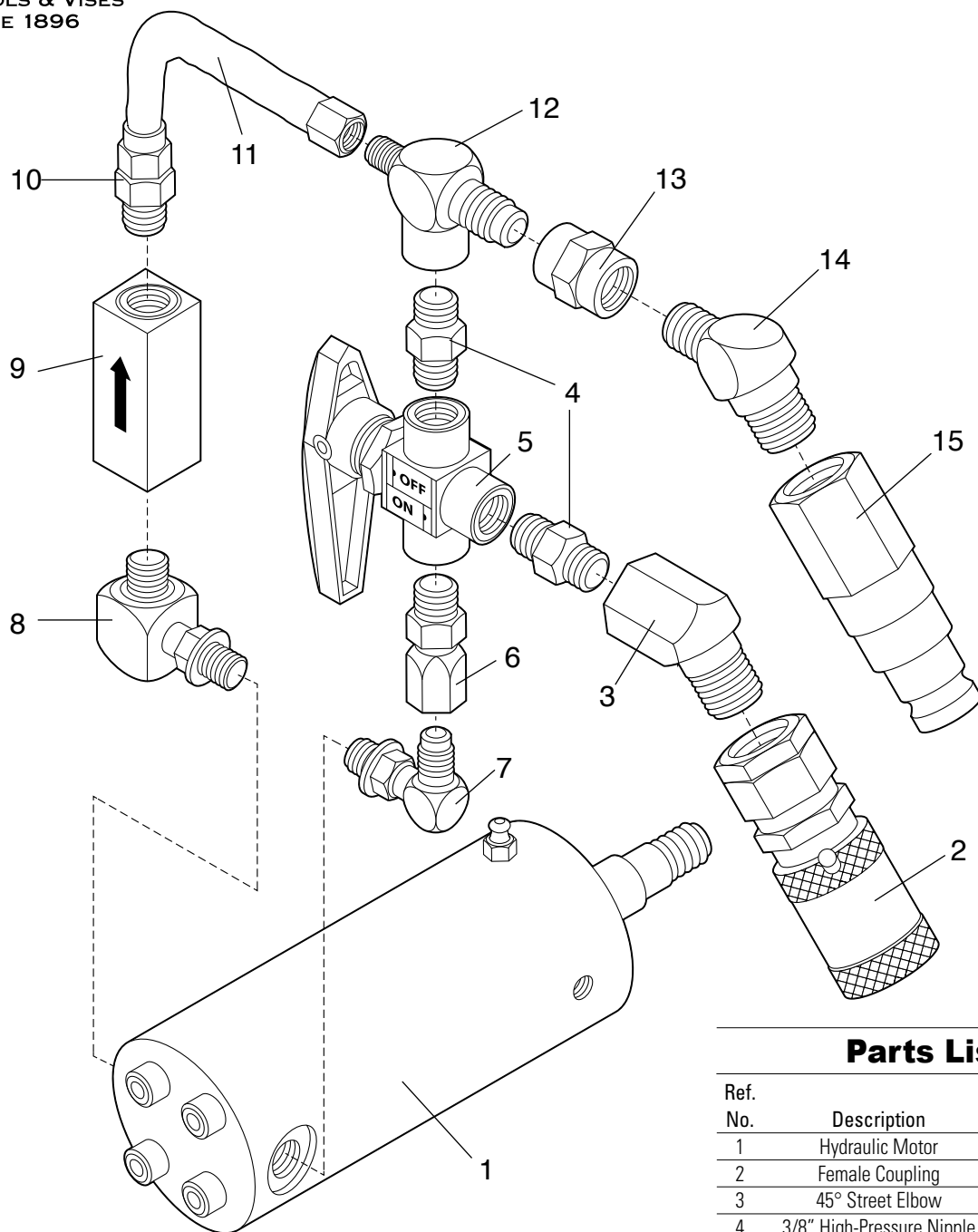
PIPE TOOLS & VISES
SINCE 1896

Universal Pipe Cutter (Hydraulic Motor Assembly)

Replacement Parts

Drawing No.

U10



Parts List

| Ref. No. | Description | Item Code | Qty |
|----------|---------------------------|-----------|-----|
| 1 | Hydraulic Motor | 40309 | 1 |
| 2 | Female Coupling | 40174 | 1 |
| 3 | 45° Street Elbow | 40180 | 1 |
| 4 | 3/8" High-Pressure Nipple | 40185 | 2 |
| 5 | 3-Way Ball Valve | 40312 | 1 |
| 6 | Swivel Adapter | 40176 | 1 |
| 7 | Pressure Line Elbow | 40179 | 1 |
| 8 | Return Line Elbow | 40355 | 1 |
| 9 | In-Line Check Valve | 40354 | 1 |
| 10 | Male Connector | 40353 | 1 |
| 11 | Tubing Assembly | 40178 | 1 |
| 12 | Special Shape Tee | 40182 | 1 |
| 13 | Pipe Coupling | 40181 | 1 |
| 14 | 45° Male Elbow | 40175 | 1 |
| 15 | Male Coupling | 40173 | 1 |

* UPC Hydraulic models were discontinued at Reed in 2009. Some replacement parts are available.



PIPE TOOLS & VISES
SINCE 1896

Universal Pipe Cutter (Pneumatic Motor Assembly)

Replacement Parts

Drawing No.

U11

Parts List

| Ref. No. | Description | Item Code | Qty |
|----------|---------------------------------|-----------|-----|
| 1 | Pneumatic Motor | 40150 | 1 |
| 2 | Bronze Close Nipple | 97564 | 1 |
| 3 | Bronze 90° Elbow | 97565 | 1 |
| 4 | Bronze Ball Valve | 97566 | 1 |
| 5 | Bronze Hose Coupling | 97567 | 1 |
| 6 | Bronze End Cap | 97568 | 1 |
| 7 | Hairpin (included with #5 & #6) | | 1 |

